

About:

PLASSON have one of the widest ranges of pipe fittings in the world with sizes ranging from 16mm to 900mm, pressure ratings 0 bar to 25 bar, accepting nearly all existing pipe ranges, metric and imperial including polyethylene, lead, copper and galvanised. PLASSON have a 50 year in the ground track record for its products. We pride ourselves not only on the quality of our fittings but also on our high standard of service, delivery and aftersales support.

Product Range:

- mechanical
- pushfit
- electrofusion
- valves
- metering
- repair clamps
- threaded
- tools/accessories
- specialist ef tooling

Contact Us:

Plasson UK Ltd
Plasson House
27 Albert Drive
Burgess Hill
West Sussex
RH15 9TN

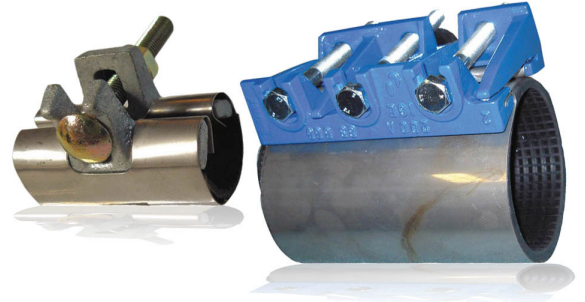
Tel: 01444 244446
Fax: 01444 258683
sales@plasson.co.uk

6800 Stainless Steel Repair Clamp

PLASSON stainless steel repair clamps are quick and easy to use making them ideal for emergency repairs.

Key Features:

- Stainless Steel construction with Ductile clamping jaws.
- Designed to be assembled on the main without pipe cutting.
- Wrap around design.
- Can be used on live mains.
- Excellent tolerance range.
- Wide size range available.
- Light and easy to handle.
- Cost effective.
- Waffle type seal.
- Captive bolts with nuts that do not require removal to use the clamp.
- Design reduces the size of excavation needed.



6800 Repair Clamp Stainless (76mm - 1 bolt)



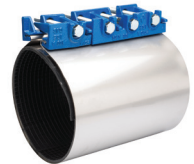
Code	d
6800200	21-25 x 76
6800300	26-30 x 76
6800400	33-37 x 76
6800500	42-45 x 76
6800600	48-51 x 76
6800700	60-65 x 76

6800 Repair Clamp Stainless (200mm - 3 bolt)



Code	d
6800750	78-88 x 200
6800800	88-98 x 200
6800850	92-103 x 200
6800875	108-118 x 200
6800900	114-126 x 200
6800100	168-182 x 200

6800 Repair Clamp Stainless (300mm - 4 bolt)



Code	d
6800110	210-223 x 300
6800120	222-234 x 300
6800130	243-255 x 300
6800140	273-285 x 300
6800150	285-297 x 300

Fitting	Pressure Rating
6800	PN16
Component	Materials
Clamp Shell	Stainless Steel AISI 304 18.8
Clamp Jaws	EN-GJS-400-15 acc. to UNI EN 1563 norms
Waffle Seal	EPDM APE 55N Shore 53 + or -5
Bolts	High Tensile Steel, Galvanised M14 (multi bolt)
WRAS Cert No	1009550