

About:

PLASSON have one of the widest ranges of pipe fittings in the world with sizes ranging from 16mm to 900mm, pressure ratings 0 bar to 25 bar, accepting nearly all existing pipe ranges, metric and imperial including polyethylene, lead, copper and galvanised. PLASSON have a 50 year in the ground track record for its products. We pride ourselves not only on the quality of our fittings but also on our high standard of service, delivery and aftersales support.

Product Range:

- mechanical
- pushfit
- electrofusion
- valves
- metering
- repair clamps
- threaded
- tools/accessories
- specialist ef tooling

Contact Us:

Plasson UK Ltd
Plasson House
27 Albert Drive
Burgess Hill
West Sussex
RH15 9TN

Tel: 01444 244446
Fax: 01444 258683
sales@plasson.co.uk

Pushfit

PE x Copper/PB/PEX

Plasson **pushfit** is a range of innovative push-fit fittings that provide connectivity of Polyethylene (MDPE) pipe to a variety of plumbing pipe materials. Inserting the pipe up to the fitting stop creates both seal and grip on the pipe.

Pushfit 1001C connects from Polyethylene (MDPE) pipe to Copper (table X), Polybutylene (PB) & PEX pipes.

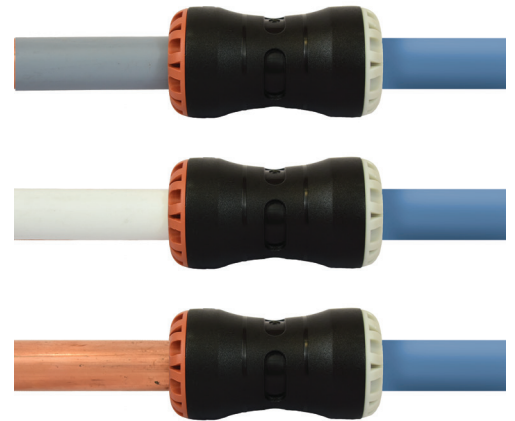
When using PB/PEX pipes, use pipe manufacturers liner.

Pushfit fittings are simple to assemble, making the job easier whilst providing the world famous PLASSON reliability.

Pushfit is WRAS approved and 16 bar rated fitting system when used with an appropriate liner.

Key Features:

- Range of fittings from 20 to 63mm.
- Assembly tools not required, simply push to fit.
- Compact size allows assembly in confined spaces.
- Fully demountable.
- Lightweight and maintenance free.
- 50 year design life.
- Tamper resistant.
- Provides connectivity of polyethylene (MDPE) pipe to MDPE, copper, PB, PEX and imperial pipe.
- Fully end loaded performance so no need to restrain joints.
- Pipe liners sold separately. PLASSON's standard 7950 pipe liner fits both the pushfit and mechanical range.



The Range:

0341C Pushfit Stop Tap
PE x Cu/PB/PEX
Above Ground Only



Code	d
03410020015	20 x 15
03410025015	25 x 15
03410025022	25 x 22
03410032028	32 x 28

1002C Male Adaptor
to Cu/PB/PEX



Code	d
1002C7015007	15 x 3/4"
1002C7022007	22 x 3/4"
1002C7028010	28 x 1"

1003C Female Adaptor



Code	d
1002C7015007	15 x 3/4"
1002C7022007	22 x 3/4"
1002C7028010	28 x 1"

1001C Coupler
PE x Cu/PB/PEX



Code	d
1001CU020015	20 x 15
1001CU025015	25 x 15
1001CU025022	25 x 22
1001CU032028	32 x 28